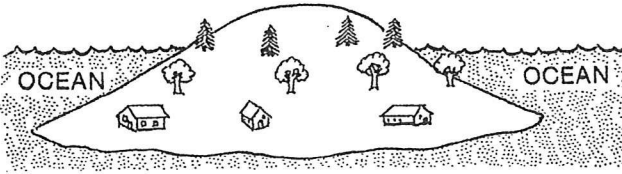


Geolab 11

HEIGHTS ON MAPS

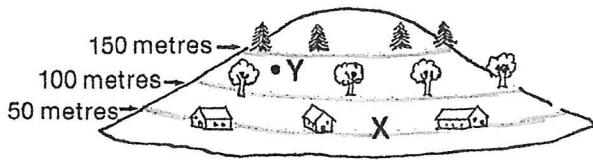
The best way to show heights on maps is with contour lines. Contour lines join points on a map that are of equal height above sea level.

Geolab 11 — Exercise

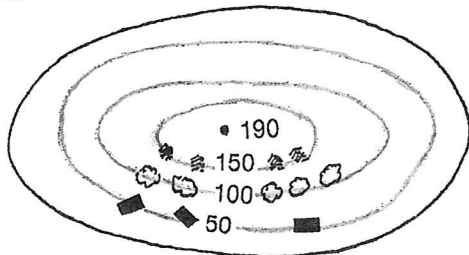


1. On this island the houses are all fifty metres above sea level. The deciduous trees are one hundred metres above sea level. The coniferous trees are one hundred and fifty metres above the level of the sea.

The following drawing shows the island with the three contours drawn. The contour interval is 50 m.

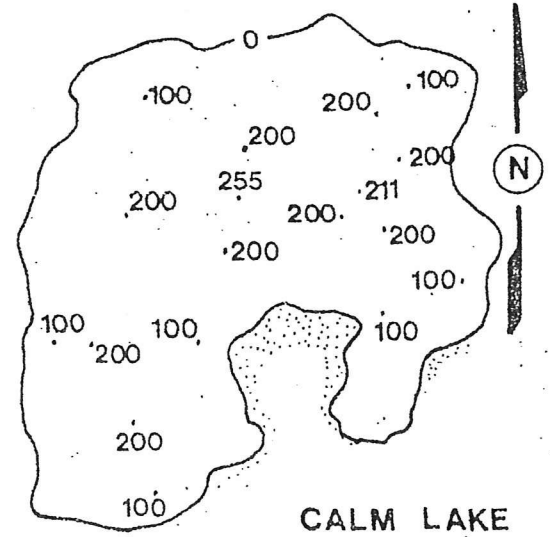


- How high above sea level is point X?
 - About how high above sea level is point Y?
2. The island is an oval shape. The map below shows the 50, 100, and 150 m contour lines. Each line forms an oval similar but smaller than the island in shape. On this map the highest point is shown with a dot. This is called a spot height.



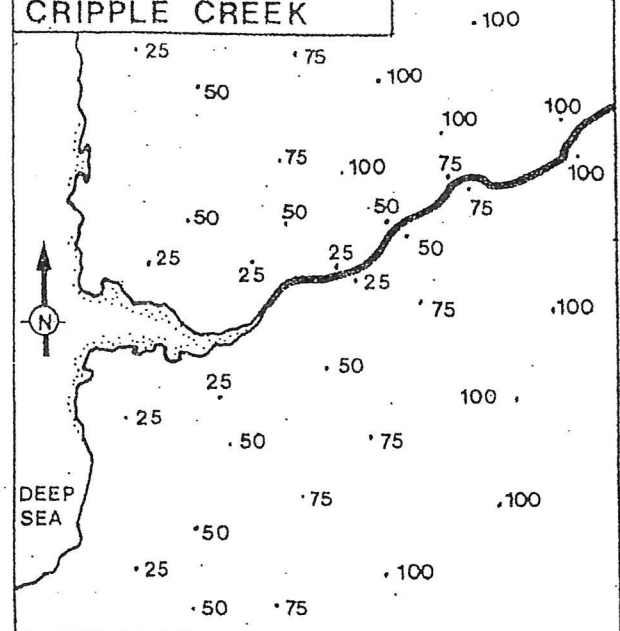
- Copy the contour map. Show on your contour map the location of X and Y.
- What is the maximum height of the island?

GREGORY ISLAND



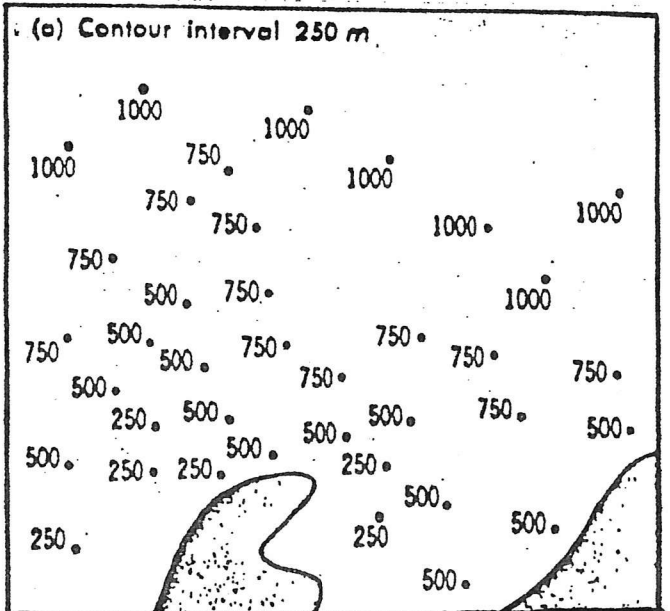
CONTOUR INTERVAL 100 m

CRIPPLE CREEK



CONTOUR INTERVAL 25 m

(e) Contour interval 250 m.



Contours and Landforms

- The column at the left contains five sets of contour lines and on the right are five drawings representing different land forms. Select the correct land form and draw it in the space alongside the contour

